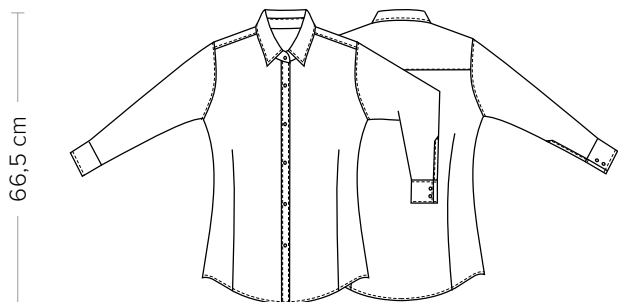


**DETTAGLI**  
- Collo classico

**TAGLIE**  
XS ÷ 3XL  
Slim Fit



**COLORE**  
00 Bianco  
000 Nero

**TESSUTO**  
97% cotone  
3% elastan  
96 g / m<sup>2</sup>



Le misure indicate si riferiscono alle taglie **S** per i capi femminili, **L** per i capi maschili. Per i capi a taglia unica le misure indicate sono effettive.

### COLORI DISPONIBILI



00 Bianco



000 Nero

TABELLE TAGLIE  
E CORRISPONDENZE

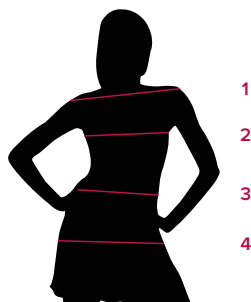
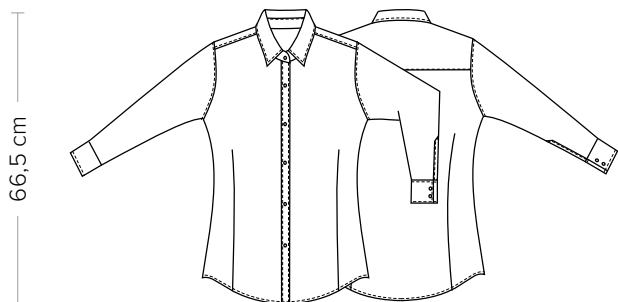


TABELLA ST-N4 SLIM FIT							
TAGLIA	XS	S	M	L	XL	XXL	3XL
1 - SPALLE							
2 - CIRCONFERENZA TORACE	84-88	89-92	93-98	99-106	107-114	115-122	123-130
3 - CIRCONFERENZA VITA	70-74	75-78	79-85	84-93	94-102	103-112	113-121
4 - CIRCONFERENZA BACINO							

**GUIDA ALLE TAGLIE** **1)** Prendere le misure anatomiche (corpo con abbigliamento intimo) senza stringere mantenendo ben teso il metro. **Nota:** nel caso vogliate indossare dei camici già con dell'abbigliamento sotto prendete le misure già abbigliati. **2)** Nel caso tra le misure prese vi fosse una misura a cavallo fra 2 taglie vi consigliamo di prendere quella più grande. **3)** Le misure della tabella sono espresse in centimetri.

**DETAILS**  
- Classic collar

**SIZES**  
XS ÷ 3XL  
Slim Fit



**COLOURS**  
00 White  
000 Black

**FABRIC**  
97% cotton  
3% elastane  
96 g / m<sup>2</sup>



The measures indicated refer to sizes **S** for women, **L** for men. For one-size-fits-all garments, the measurements indicated are effective.

### AVAILABLE COLOURS



00 White



000 Black

SIZE TABLES  
AND CORRESPONDENCES

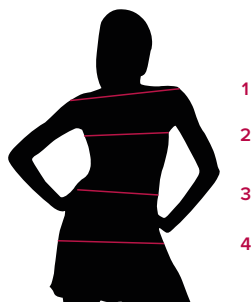


TABLE ST-N4 SLIM FIT							
SIZE	XS	S	M	L	XL	XXL	3XL
1 - SHOULDERS							
2 - CHEST CIRCUMFERENCE	84-88	89-92	93-98	99-106	107-114	115-122	123-130
3 - WAIST CIRCUMFERENCE	70-74	75-78	79-85	84-93	94-102	103-112	113-121
4 - HIPS CIRCUMFERENCE							

**SIZE GUIDE** **1)** Take the anatomical measurements (body with underwear) without tightening, keeping the measuring tape taut. Note: in case you want to wear of the gowns already with the clothing underneath take the measurements already dressed. **2)** If there is a measure between 2 sizes between the measurements taken, we advise you to take the bigger one. **3)** The measurements in the table are expressed in centimeters.